

DRM-900 PRE-STAINED Morphology Slides

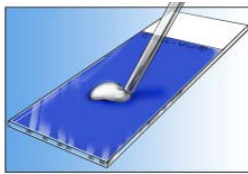
Prestained Morphology Slides



[Click Here To Order](#)

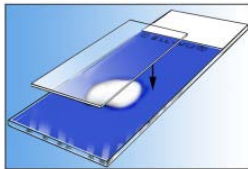
Cell-VU® pre-stained slides combine conventional microscope slides and methylene blue and cresyl violet stains into a single, ready to use device. Cell-VU® pre-stained slides are designed for use in rapid staining and morphological assessment of undiluted spermatozoa. Each slide contains a dried layer of stain that allows for immediate visualization of sperm head, acrosome and tail. Undiluted spermatozoa are applied directly to the slide and a coverslip is placed over the sample. Cell-VU® can be used for World Health Organization and Kruger strict morphology assessment. Cell-VU® pre-stained slides can also be used for rapid cell evaluation from whole blood, CSF and urine samples.

Prestained Morphology Slides

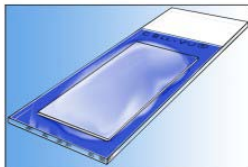


Direction for use

Apply a small drop (approximately ~2-4 microliters) of specimen on the center of the slide.



Place the cover glass (24 x 24 mm or 24 x 40 mm) on top of the slide, exerting slight pressure on the coverglass.



Allow slide to stand at room temperature for 15 minutes before microscopic observation is made.

Expected Findings:

These slides are for evaluating sperm head/acrosome size, differentiation of white blood cells in peripheral blood and cytology of body fluids.

Warnings:

EDTA is the recommended anticoagulant for venous blood. Oxalae, fluoride and heparinized blood are not suitable.